

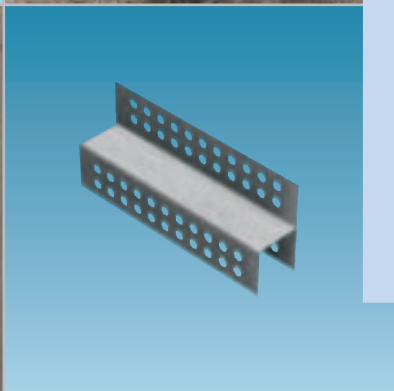
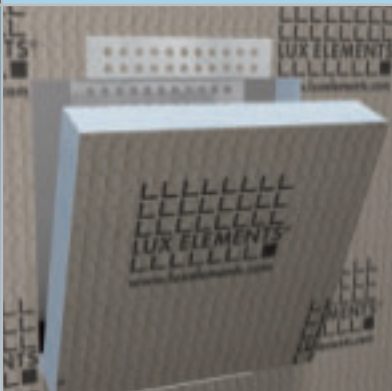
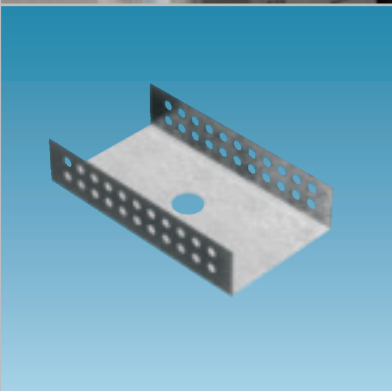
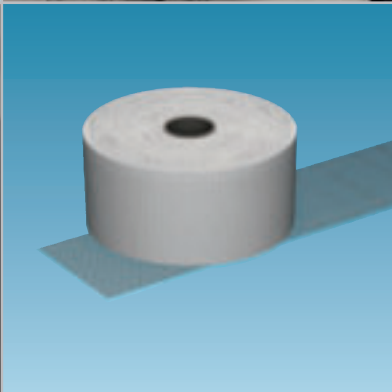
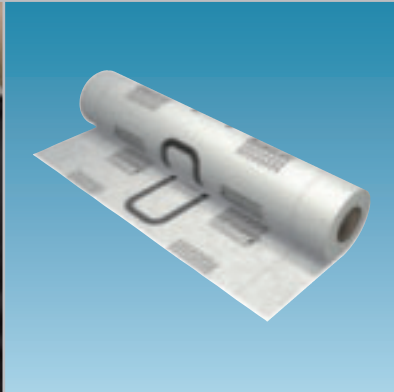
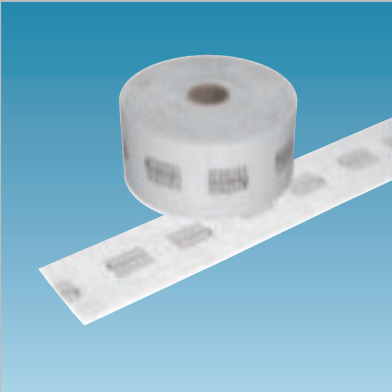
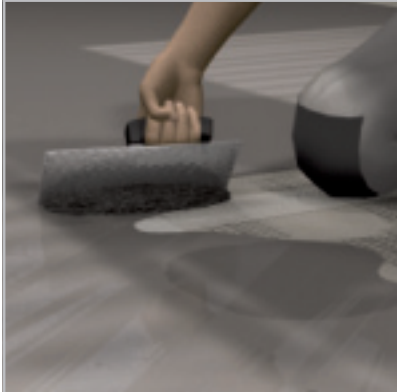
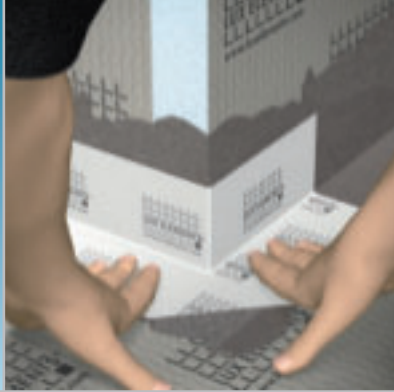
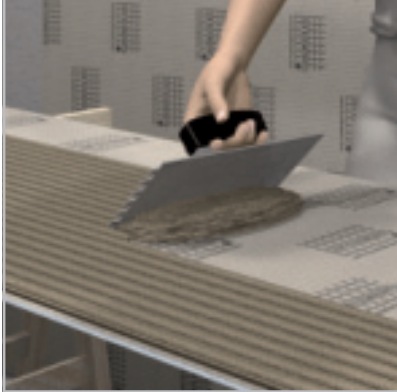
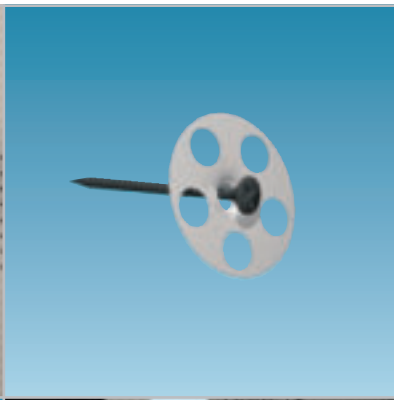
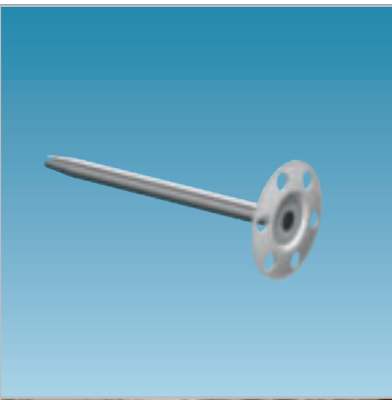


The system components

Everything for the quick and reliable processing of the LUX ELEMENTS® hard foam support elements.

- LUX ELEMENTS®-FIX – Fastening sets and dowels
- LUX ELEMENTS®-COL – Adhesives
- LUX ELEMENTS®-DRY – Sealing filler and sealing tapes
- LUX ELEMENTS®-ARM – Reinforcement fabric
- LUX ELEMENTS®-MONT – Mounting aids



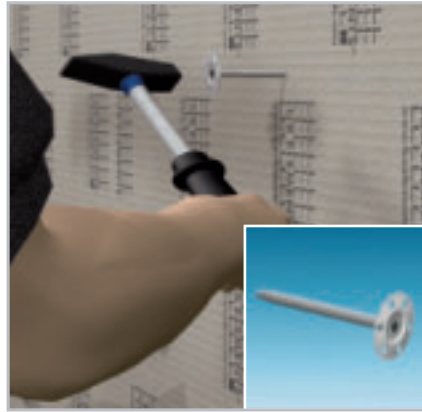




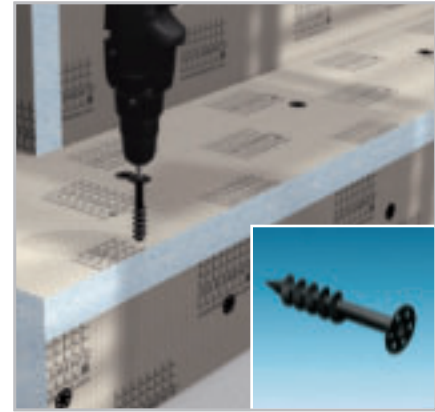
Fastening sets and dowels



FIX-KSD – Plastic hammer fix plug



FIX-FID – Hammer fix plugs



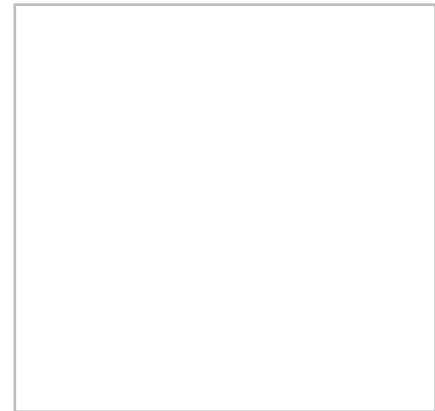
FIX-SD – Special screw plug



FIX-SB – Fastening set: screw and washer



FIX-PRO-MAK – Hard plastic insert



LUX ELEMENTS®-FIX are fastening sets/aids and dowels for LUX ELEMENTS® hard foam support elements.

FIX-KSD

Plastic hammer fixing plug for fixing hard foam support elements to an interior wall, drill with $\text{O } 5/16$ in drill. Anchoring depth $1 \text{ } 3/16$ – $1 \text{ } 31/32$ in.

FIX-FID

Hammer fix plug, drill with $\text{O } 5/16$ in drill. Anchoring depth: $1 \text{ } 31/32$ in min. The expanding part ($1 \text{ } 31/32$ in) must be anchored in a firm substrate, in order to ensure secure mounting through the expansion of the plug. The remaining plug length is the working length.

FIX-SD

Special screw plug for connecting hard foam support elements. Select low speed, medium torque!. Bit type PH3/PH2/PR2.

FIX-SB

Screw and washer fastening set for the installation on supports.

FIX-PRO-MAK

Hard plastic inlay which is stuck onto the hard foam where a stable mounting for a door hinge, for example, is required. Screws can then be simply screwed in. The hinges mounted in this way hold even heavy glass doors firmly.

■ PRODUCT AND PACKAGING SPECIFICATIONS – LUX ELEMENTS®-FIX

	ARTICLE-NUMBER	ARTICLE-NAME / ARTICLE-DESCRIPTION	NOMINAL FORMAT/ DIMENSIONS	CONTAINER / PACKAGING	WEIGHT / CONTAINER	CONTENTS INDIVIDUAL PACKAGING	UNIT
	LFIXZ1034	FIX-KSD 50 Plastic hammer fix plug	1 31/32 in length	bag	0,25 kg	50 pieces	piece
	LFIXZ1035	FIX-KSD 70 Plastic hammer fix plug	2 3/4 in length	bag	0,30 kg	50 pieces	piece
	LFIXZ1036	FIX-KSD 90 Plastic hammer fix plug	3 5/64 in length	bag	0,40 kg	50 pieces	piece
	LFIXZ2101	FIX-FID 80 Hammer-fix plug	3 5/32 in length	bag	0,70 kg	50 pieces	piece
	LFIXZ2032	FIX-FID 80 Hammer-fix plug	3 5/32 in length	bag	0,15 kg	10 pieces	piece
	LFIXZ1102	FIX-FID 110 Hammer-fix plug	4 21/64 in length	bag	1,10 kg	50 pieces	piece
	LFIXZ1103	FIX-FID 110 Hammer-fix plug	4 21/64 in length	bag	0,21 kg	10 pieces	piece
	LFIXZ1104	FIX-FID 140 Hammer-fix plug	5 33/64 in length	bag	1,70 kg	50 pieces	piece
	LFIXZ1010	FIX-SD 80 Screw plug	3 5/32 in length	bag	0,34 kg	50 pieces	piece
	LFIXZ1110	FIX-SD 80 Screw plug	3 5/32 in length	bag	0,06 kg	10 pieces	piece
	LFIXZ1030	FIX-SD 130 Screw plug	5 1/8 in length	bag	0,70 kg	50 pieces	piece
	LFIXZ1130	FIX-SD 130 Screw plug	5 1/8 in length	bag	0,12 kg	10 pieces	piece
	LFIXZ1111	FIX-HS 80S70 Screw with washer for wooden substrate	Screw: 3 5/32 in length, washer: \varnothing 2 3/4 in	bag	1,36 kg	50 sets	set
	LFIXZ1112	FIX-SB 45S35 Fastening sets with screw and washer	Screw: 1 49/64 in length, washer: \varnothing 1 3/8 in	bag	0,34 kg	50 sets	set
	LFIXZ1113	FIX-SB 80S35 Fastening sets with screw and washer	Screw: 3 5/32 in length, washer: \varnothing 1 3/8 in	bag	0,70 kg	50 sets	set
	LFIXZ1114	FIX-S 35 Washer, galvanised	\varnothing 1 3/8 in	bag	0,15 kg	50 pieces	piece
	LFIXZ1033	FIX-S 35 Washer, galvanised	\varnothing 1 3/8 in	bag	0,05 kg	10 pieces	piece
	LFIXZ1115	FIX-S 70 Washer, galvanised	\varnothing 2 3/4 in	bag	0,95 kg	50 pieces	piece
	LFIXZ1025	FIX-S 60 Washer, stainless steel	\varnothing 2 5/32 in	bag	0,50 kg	50 pieces	piece
	LFIXZ1031	FIX-PRO-MAK Hard plastic insert for stabilising fastenings	0 5/16 in high, max. 2 23/64 in wide				running meter



Adhesives



COL-HSV – Primer



COL-FLEX – Tile adhesive



COL-AK – Fixing adhesive



COL-MK – Mounting adhesive

LUX ELEMENTS®-COL are adhesives and primers for attaching, laying, bonding, gluing and mounting of LUX ELEMENTS® hard foam support elements:

Primer – COL-HSV

LUX ELEMENTS®-COL-HSV is a solvent-free dispersion primer, primarily suitable for wooden substrates

- for priming absorbing substrates
- as a preliminary wash primer for smooth and sealed substrates
- as moisture protection for calcium-sulphate bonded substrates

Tile adhesive – COL-FLEX

LUX ELEMENTS®-COL-FLEX is suitable for thin-bed adhesion in accordance with DIN 18157 part 1

- of ceramic tiles, panels and mosaic
- fine stoneware
- discolouration-resistant natural stone panels
- ceramic coatings in pools

COL-FLEX is particularly used for laying onto LUX ELEMENTS® hard foam support elements or substrates where stresses are a possibility.

COL-FLEX complies with the C2 TE requirement in accordance with DIN EN 12004 and is low on chromate in accordance with EC directive 2003/53/EC.

Fixing adhesive – COL-AK

LUX ELEMENTS®-COL-AK is a ready-mixed dry mortar for the attaching and adhesion of LUX ELEMENTS® hard foam support elements.

COL-AK is:





- stable, fast bonding, frost-proof, waterproof
- low on chromate in accordance with EC directive 2003/53/EC.

Mounting adhesive – COL-MK

LUX ELEMENTS®-COL-MK is a moisture-curing, 1-component adhesive based on silane-terminated polymers:

- suitable for the gluing of LUX ELEMENTS® hard foam support elements both to one another and to wood, wood materials, various metals, stone and ceramics.
- elastic when set, i.e. it is very well suited for stress-compensating bonding.
- also adheres in the presence of water (not underwater areas) and offers additional security here with waterproofing function.
- adheres to numerous substrates.

■ PRODUCT AND PACKAGING SPECIFICATIONS – LUX ELEMENTS®-COL

	ARTICLE-NUMBER	ARTICLE-NAME / ARTICLE-DESCRIPTION	CONTAINER / PACKAGING	WEIGHT / CONTAINER	CONTENTS INDIVIDUAL PACKAGING	CONTENTS COLLECTIVE PACKAGING	UNIT
	Primer						
	LCOLZ1012	COL-HSV Dispersion-free primer	bottle	1 kg	1 kg		piece
	Tile adhesive						
	LCOLZ1011	COL-FLEX Flexible cement powder adhesive	bag	25 kg	25 kg		kg
	LCOLZ1111	COL-FLEX Flexible cement powder adhesive	euro pallet	1050 kg		42 x 25 kg	kg
	Fixing adhesive – only for applications in the wellness area						
	LCOLZ1001	COL-AK Fixing adhesive	bag	25 kg	25 kg		kg
	LCOLZ1101	COL-AK Fixing adhesive	euro pallet	1050 kg		42 x 25 kg	kg
	LCOLZ1014	COL-AK Fixing adhesive	bag	5 kg	5 kg	4 x 5 kg	kg
	Mounting adhesive						
	LCOLZ1036	COL-MK Mounting adhesive	cartouche	0,5 kg	290 ml		piece
	LCOLZ1136	COL-MK Mounting adhesive	cardboard box	6 kg		12 x 290 ml	piece



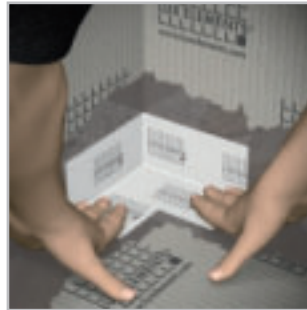
Sealing filler and sealing tapes



DRY-DB(V) – Integrating sealing tape into wall/floor connections



DRY-DF – Sealing film for surfaces



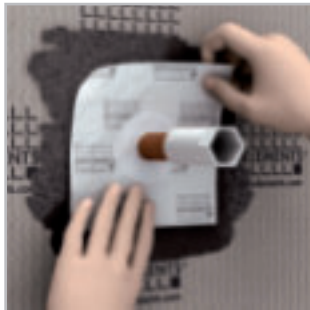
DRY-DB(V)IE – Forming interior corners



DRY-DB(V)AE – Forming exterior corners



DRY-DBWM – Sealing pipe duct



DRY-DBDZM – Expansion zone sleeve



DRY-ASK – Filling wall and floor surfaces



LUX ELEMENTS®-DRY are sealing tapes, films and fillers for producing waterproof substrates.

Applications:

LUX ELEMENTS®-DRY-DB is an extremely thin, tear-resistant yet elastic and vapour-permeable special tissue for sealing and is suitable for all connection sealing arising with DRY-ASK and DRY-DF such as:

- wall/floor connections
- interior corners
- exterior corners
- pipe ducts

LUX ELEMENTS®-DRY-DF is an extremely thin, tear-resistant special tissue for sealing and is suitable for laminar, alternative seals on floors and walls. The DRY-DB and DRY-ASK system components complete the sealing at transitions, corner etc.

LUX ELEMENTS®-DRY-DBDZM are expansion sleeves of PU in two sizes that have a central expanding zone to enable pipes of different external diameters to be sealed. Installation with DRY-ASK.

LUX ELEMENTS®-DRY-DBV – Sealing tape with sealing vapour-barrier properties for use on the fleece-backed ELEMENT-VK (see p. 18), e.g. for sealing plate joints. Also in the shape of:

- internal corners (DRY-DBVIE)
- external corners (DRY-DBVAE)

LUX ELEMENTS®-DRY-ASK is a single-component, water-impermeable, crack-bridging and flexible sealing compound and is particularly suitable for sealing LUX ELEMENTS® hard foam support elements.

■ PRODUCT AND PACKAGING SPECIFICATIONS – LUX ELEMENTS®-DRY

	ARTICLE-NUMBER	ARTICLE-NAME / ARTICLE-DESCRIPTION	NOMINAL FORMAT/ DIMENSIONS	CONTAINER / PACKAGING	WEIGHT / CONTAINER	CONTENTS INDIVIDUAL PACKAGING	UNIT
	LDRYZ1151	DRY-DB Sealing tape	3 15/16 in	roll	0,15 kg	196 27/32 in	m
	LDRYZ2001	DRY-DB Sealing tape	3 15/16 in	roll	0,4 kg	393 45/64 in	m
	LDRYZ2002	DRY-DB Sealing tape	3 15/16 in	roll	2,0 kg	1968 1/2 in	m
	LDRYZ2014	DRY-DF Sealing film	39 3/8 in	roll	4,2 kg	393 45/64 in	m
	LDRYZ2013	DRY-DF Sealing film	39 3/8 in	roll	10,7 kg	1181 7/64 in	m
	LDRYZ2103	DRY-DBIE Sealing tape for inner corners		bag	0,045 kg	1 piece	piece
	LDRYZ2104	DRY-DBAE Sealing tape for outer corners		bag	0,045 kg	1 piece	piece
	LDRYZ2206	DRY-DBWM Sealing sleeve for pipe openings	4 23/32 / 4 23/32 in	bag	0,1 kg	4 pieces	piece
	LDRYZ2215	DRY-DBDZM 120 Expansion zone sleeve	4 23/32 / 4 23/32 / 0 63/64 / 0 5/16 in	bag	0,12 kg	1 pieces	pieces
	LDRYZ2216	DRY-DBDZM 150 Expansion zone sleeve	5 29/32 / 5 29/32 / 2 23/64 / 0 25/32 in	bag	0,14 kg	1 pieces	pieces
	LDRYZ3001	DRY-DBV Sealing tape for ELEMENT-VK	4 23/32 in	roll	1,5 kg	1181 7/64 in	m
	LDRYZ3002	DRY-DBV Sealing tape for ELEMENT-VK	4 23/32 in	roll	0,5 kg	393 45/64 in	m
	LDRYZ3101	DRY-DBVIE Sealing tape for ELEMENT-VK inside corners		bag	0,043 kg	1 piece	piece
	LDRYZ3102	DRY-DBVAE Sealing tape for ELEMENT-VK outside corners		bag	0,043 kg	1 piece	piece
	LDRYZ1016	DRY-ASK * Sealing filler		bag	3,5 kg		kg
	LDRYZ1012	DRY-ASK * Sealing filler		bag	20 kg		kg

* only for applications in the wellness area



Reinforcement fabric



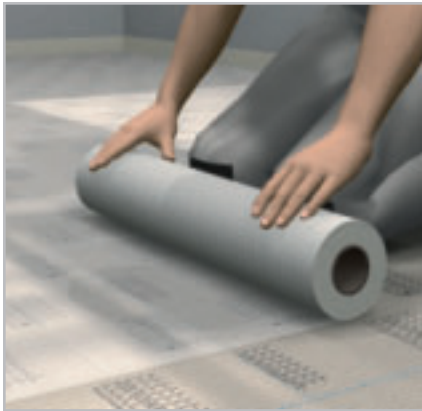
ARM-100 SK – self-adhesive



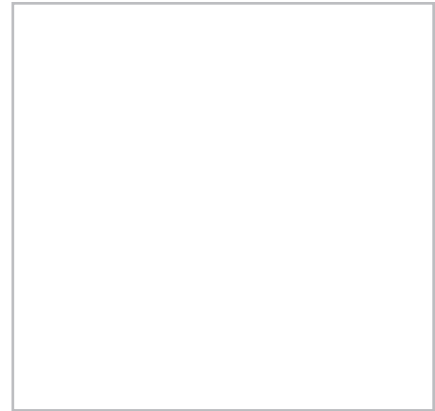
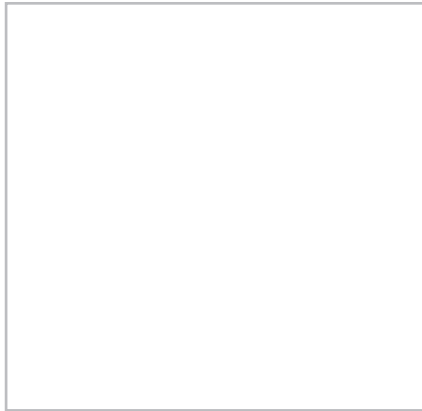
ARM-100 SK – for transitions and board joints



ARM-150/250 SK – for corners



ARM 600 – for surfaces







LUX ELEMENTS®-ARM are reinforcement fabrics for board joints, transitions, surfaces and corners in various widths.

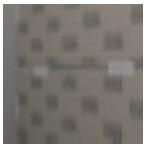
Applications:

- board joints
- transitions
- surfaces
- corners

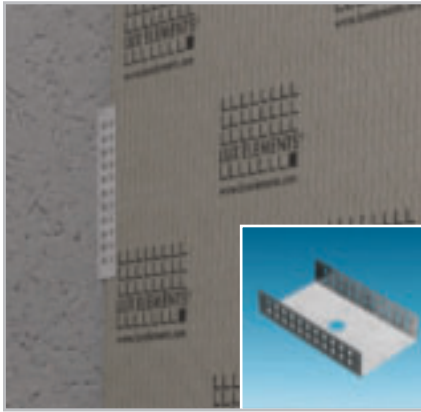
■ PRODUCT AND PACKAGING SPECIFICATIONS – LUX ELEMENTS®-ARM

	NUMÉRO D'ARTICLE	DÉSIGNATION D'ARTICLE / DESCRIPTION D'ARTICLE	FORMATS NOMINAUX / DIMENSIONS	LOT / EMBALLAGE	POIDS / LOT	CONTENU EMBALLAGE INDIVIDUEL	UNITÉ
	LARMZ1001	ARM-100 SK Reinforcement for transitions *	3 15/16 in	roll	0,5 kg	3543 5/16 in	m
	LARMZ1007	ARM-100 SK Reinforcement for transitions *	3 15/16 in	roll	0,2 kg	787 13/32 in	m
	LARMZ1006	ARM-100 SK Reinforcement for transitions *	3 15/16 in	roll	0,1 kg	393 45/64 in	m
	LARMZ1002	ARM-150 SK Reinforcement for corners *	5 29/32 in	roll	1,0 kg	1968 1/2 in	m
	LARMZ1003	ARM-250 SK Reinforcement for corners *	9 27/32 in	roll	1,5 kg	1968 1/2 in	m
	LARMZ1004	ARM-600 Reinforcement for surfaces	23 5/8 in	roll	1,5 kg	787 13/32 in	m
	LARMZ1012	ARM-600 Reinforcement for surfaces	23 5/8 in	roll	0,2 kg	98 27/64 in	m

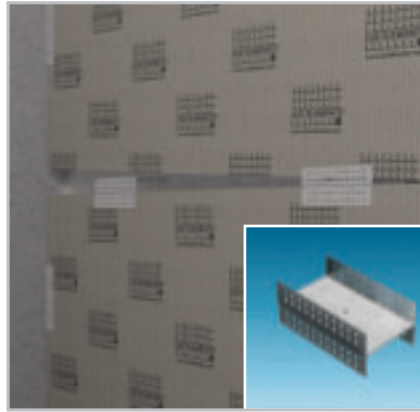
* self-adhesive design



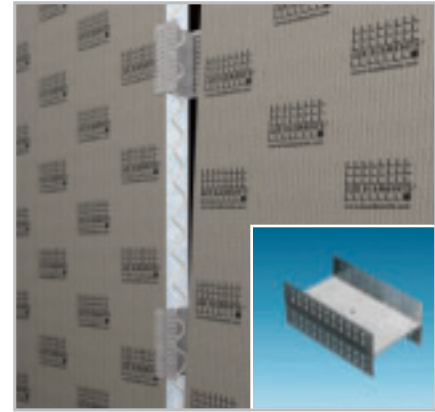
Mounting aids



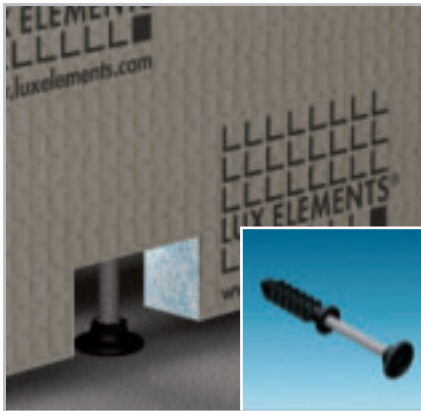
MONT-UNI – Wall and floor connection



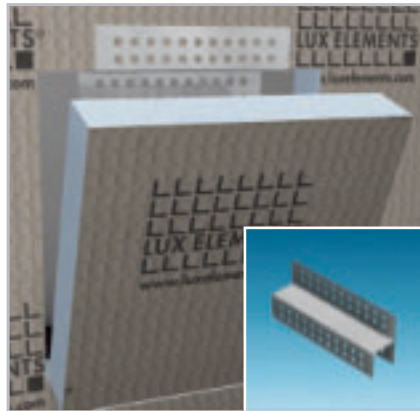
MONT-H – Connecting hard foam support elements



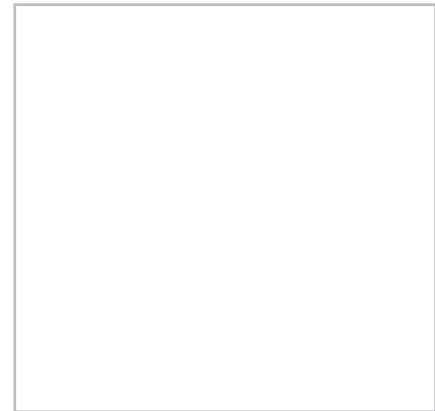
MONT-H



MONT-TOPFIX – Adjusting bath tub claddings



MONT-TOPREV – For inspection openings with the bath tub claddings



LUX ELEMENTS®-MONT-UNI, -H, -T and -E for screwing or for using adhesive help in connecting LUX ELEMENTS® hard foam support elements one to another or to walls and floors.

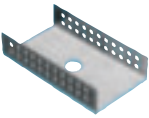
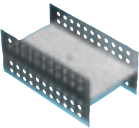
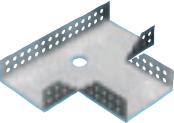
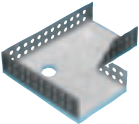

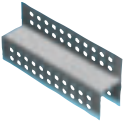
LUX ELEMENTS®-MONT-TOPREV are for inserting inspection openings with bath tub claddings.

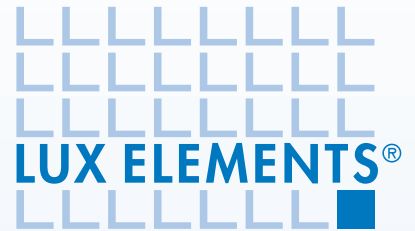
LUX ELEMENTS®-MONT-TOPFIX are adjustable feet for the LUX ELEMENTS®-TOP bath tub claddings.

Applications:

- installation at wall and floor
- installation around corner
- extending walls
- using adjustable feet to adjust bath tub claddings
- insertion of inspection openings

■ PRODUCT AND PACKAGING SPECIFICATIONS – LUX ELEMENTS®-MONT

	ARTICLE-NUMBER	ARTICLE-NAME / ARTICLE-DESCRIPTION	CONTAINER / PACKAGING	WEIGHT / CONTAINER	CONTENTS INDIVIDUAL PACKAGING	UNIT
	LMONZ1117	MONT-UNI 50 U-shape mounting aid	bag	0,35 kg	4 pieces	piece
	LMONZ1110	MONT-UNI 80 U-shape mounting aid	bag	0,42 kg	4 pieces	piece
	LMONZ1108	MONT-H 50 Mounting aid for connecting two elements	bag	0,68 kg	4 pieces	piece
	LMONZ1113	MONT-H 80 Mounting aid for connecting two elements	bag	0,92 kg	4 pieces	piece
	LMONZ1119	MONT-T 50 T-connection mounting aid	bag	0,52 kg	4 pieces	piece
	LMONZ1011	MONT-T 80 T-connection mounting aid	bag	0,72 kg	4 pieces	piece
	LMONZ1121	MONT-E 50 Corner connection mounting aid	bag	0,42 kg	4 pieces	piece
	LMONZ1012	MONT-E 80 Corner connection mounting aid	bag	0,62 kg	4 pieces	piece
	LMONZ1015	MONT-TOPFIX Adjustable foot for bath surrounds	bag	0,28 kg	6 pieces	piece
	LMONZ1009	MONT-TOPREV Mounting aid for maintenance openings for bath tubs consisting of 2 parts for top and bottom	bag	0,25 kg	1 set	set



ⓓ

LUX ELEMENTS GmbH & Co. KG

An der Schusterinsel 7

D - 51379 Leverkusen-Opladen

Tel. +49 (0) 21 71/72 12-0

Fax +49 (0) 21 71/72 12-10

info@luxelements.de

www.luxelements.com

ⓕ

LUX ELEMENTS S.A.S

ZI-31, rue d'Ensisheim

F - 68190 Ungersheim

Tél. +33 (0) 3 89 83 69 79

Fax +33 (0) 3 89 48 83 27

info@luxelements.fr

www.luxelements.fr

for Canada:

GMS Management inc.

180 Rue Arboit

L'Assomption (Québec), Canada, J5W 4P5

Tel. +1 (450) 589-8880

Fax +1 (450) 589-8881

info@gmsmanagement.ca

www.gmsmanagement.ca

